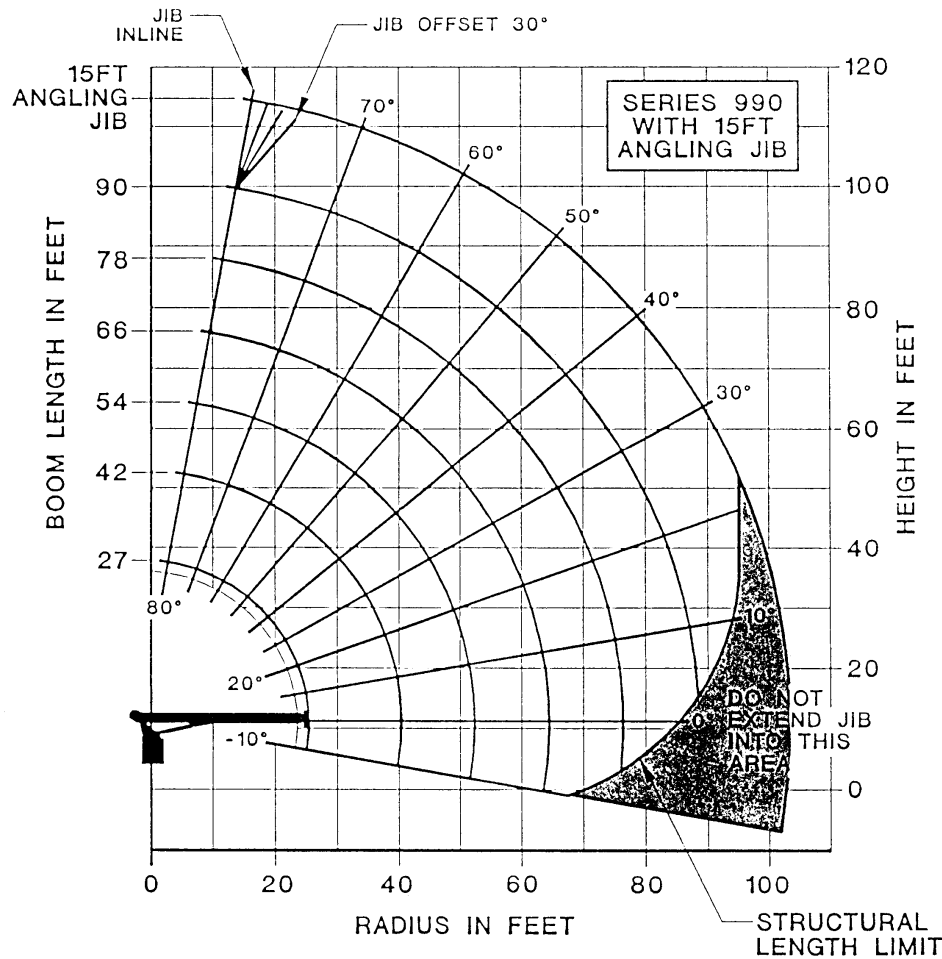


# MODERN CRANE

876646

## NATIONAL CRANE CORPORATION


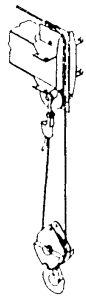
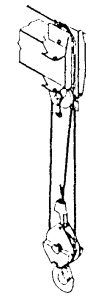





**NOTE:**

1. OPERATE WITH JIB BY RADIUS WHEN MAIN BOOM IS FULLY EXTENDED. IF NECESSARY INCREASE BOOM ANGLE TO MAINTAIN LOADED RADIUS.
2. OPERATE WITH JIB BY BOOM ANGLE WHEN MAIN BOOM IS NOT FULLY EXTENDED. DO NOT EXCEED RATED JIB CAPACITIES AT ANY REDUCED BOOM LENGTHS.

LMI OPERATING CODE SWITCH	
SWITCH POSITION (REF #17)	OPERATING MODE
01	MAIN BOOM - NO JIB STOWED
02	MAIN BOOM - JIB STOWED
06	15FT ANGLING JIB 0° OFFSET
07	15FT ANGLING JIB 10° OFFSET
08	15FT ANGLING JIB 20° OFFSET
09	15FT ANGLING JIB 30° OFFSET
11	MAN BASKET ON MAIN BOOM
13	MAN BASKET ON 15FT ANGLING JIB 0° OFFSET
14	MAN BASKET ON 15FT ANGLING JIB 10° OFFSET
15	MAN BASKET ON 15FT ANGLING JIB 20° OFFSET
16	MAN BASKET ON 15FT ANGLING JIB 30° OFFSET

# MODERN CRANE

LOAD RATINGS												JIB LOAD RATINGS (SAME CAPACITY FOR ANY OFFSET ANGLE)			
LOAD RADIUS (FEET)	LOADED BOOM ANGLE	27FT BOOM (LBS)	LOADED BOOM ANGLE	42FT BOOM (LBS)	LOADED BOOM ANGLE	54FT BOOM (LBS)	LOADED BOOM ANGLE	66FT BOOM (LBS)	LOADED BOOM ANGLE	78FT BOOM (LBS)	LOADED BOOM ANGLE	90FT BOOM (LBS)	LOAD RADIUS (FEET)	LOADED BOOM ANGLE	CAPACITY (LBS)
5	79	46,000											25	79	6,000*
8	72	32,300											30	78.5	5,150
10	67	26,700	76.5	23,500	80	22,000							35	75.5	4,300
12	62	22,800	73.5	20,500	77.5	18,800							40	72.5	3,850
14	57	19,800	70.5	17,700	75.5	16,400	79	15,200					45	69.5	3,100
16	51	17,400	67.5	15,700	73.5	14,500	77	13,300	79.5	12,400			50	66	2,600
20	37	13,800	61	12,700	68.5	11,700	73	10,800	76.5	10,000	79	9,500	55	63	2,300
25			52.5	10,100	62.5	9,400	68.5	8,700	72.5	8,000	75.5	7,600	60	59	2,000
30			43	8,250	56	7,800	63.5	7,100	68.5	6,500	72	6,100	65	55.5	1,600
35			30	6,550	49	6,400	58.5	6,000	64.5	5,450	68.5	5,100	70	52	1,350
40					41	5,400	53	5,100	60	4,650	65	4,400	75	47.5	1,050
45					31.5	4,400	47	4,400	55.5	4,000	61.5	3,800	80	43	850
50					17	3,100	40.5	3,650	51	3,500	57.5	3,250	85	38.5	600
55							32.5	3,000	45.5	3,000	53.5	2,800	90	32.5	450
60							22	2,250	40	2,500	49	2,400	*0° AND 10° JIB OFFSET ANGLE ONLY		
65									33	2,050	44.5	2,050	LOADLINE EQUIPMENT DEDUCT		
70									25	1,550	39.5	1,700	DOWNHAUL WEIGHT = 150		
75									11	700	34	1,350	ONE SHEAVE BLOCK = 200		
80											27	1,000	TWO SHEAVE BLOCK = 355		
85											17	500	THREE SHEAVE BLOCK = 530		
	0	6,500	0	3,000	0	1,600	0	700							
ADD TO CAPACITIES WHEN NO JIB STOWED (LBS)		700	400	300	200	200	100								
1 PART LINE		2 PART LINE		3 PART LINE		4 PART LINE		5 PART LINE		6 PART LINE		<b>NOTICE</b>  DO NOT DEADHEAD LINE BLOCK AGAINST BOOM TIP WHEN EXTENDING BOOM.  KEEP AT LEAST 3 WRAPS OF LOADLINE ON DRUM AT ALL TIMES.  USE ONLY 9/16" DIAMETER ROTATION RESISTANT CABLE WITH 38,500 LBS BREAKING STRENGTH ON THIS MACHINE.  MAXIMUM CAPACITY WITH "BURST OF SPEED" IS 3,000 LBS.			
															
MAX. PULL 7,700 LBS		MAX. PULL 15,400 LBS		MAX. PULL 23,100 LBS		MAX. PULL 30,800 LBS		MAX. PULL 38,500 LBS		MAX. PULL 46,000 LBS					