

STINGER **80-160**



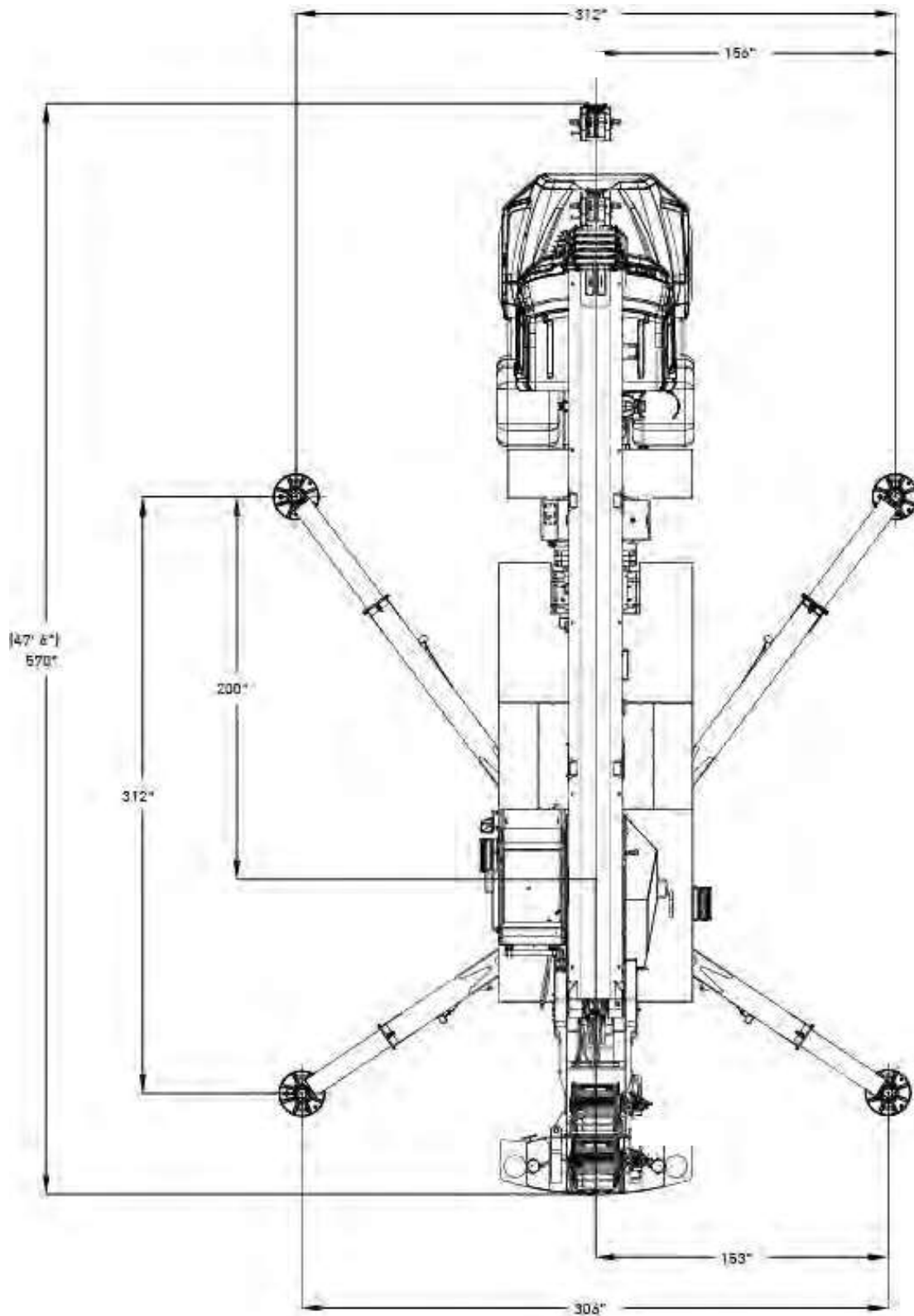
Features: STINGER 80-160

- 80 USt @ 10 ft
- 160 ft full power main boom
- 170 ft maximum tip height
- 30-58 ft optional offsettable bi-fold swing away jib
- 228 ft maximum tip height with 58 ft jib
- Tilting operator cab (0 - 18 degrees)
- Electronic rated capacity indicator
- All new crane control system
- Quick reeve boom head

DIMENSIONS

STINGER 80-160

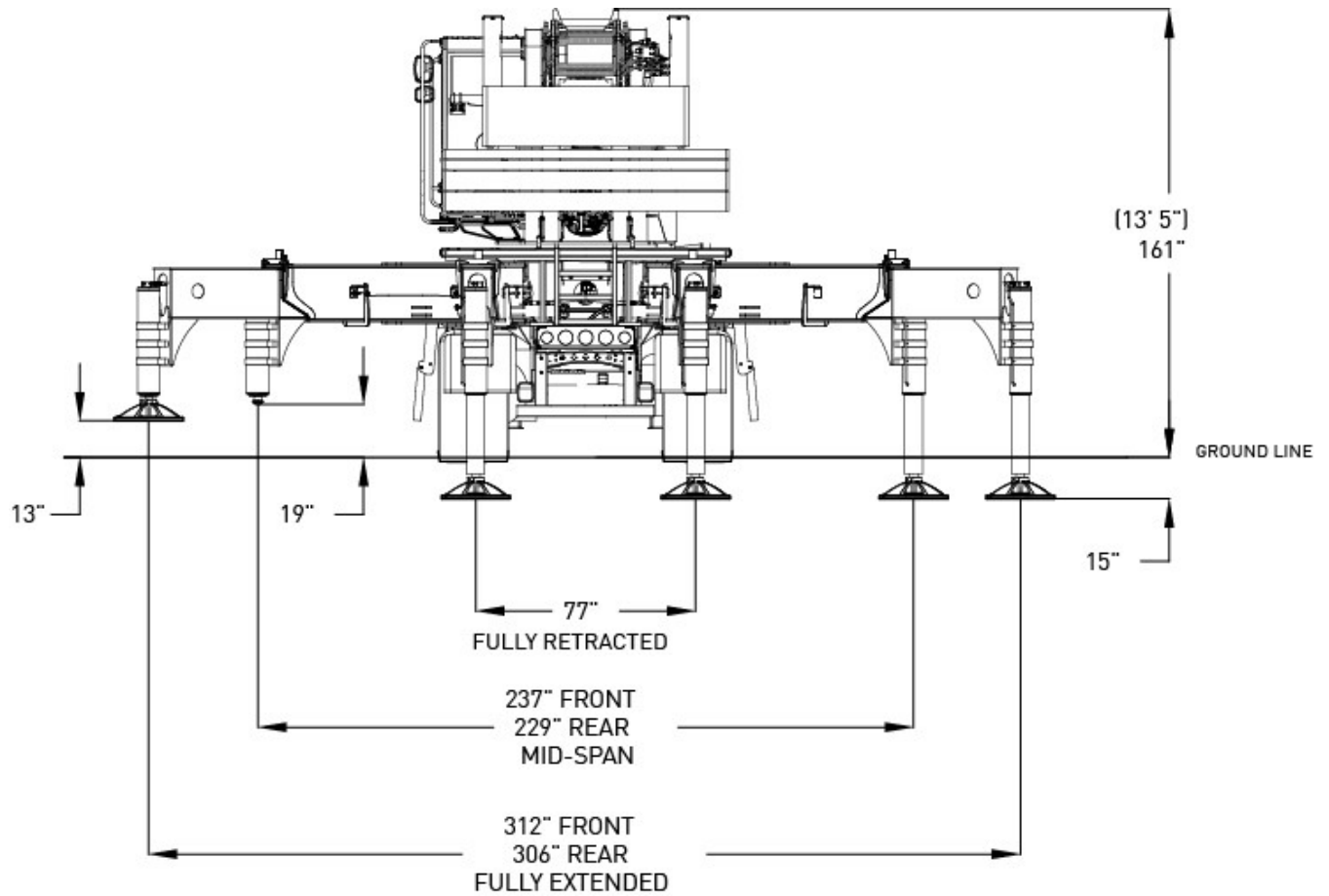
Crane Dimensions



DIMENSIONS

STINGER 80-160

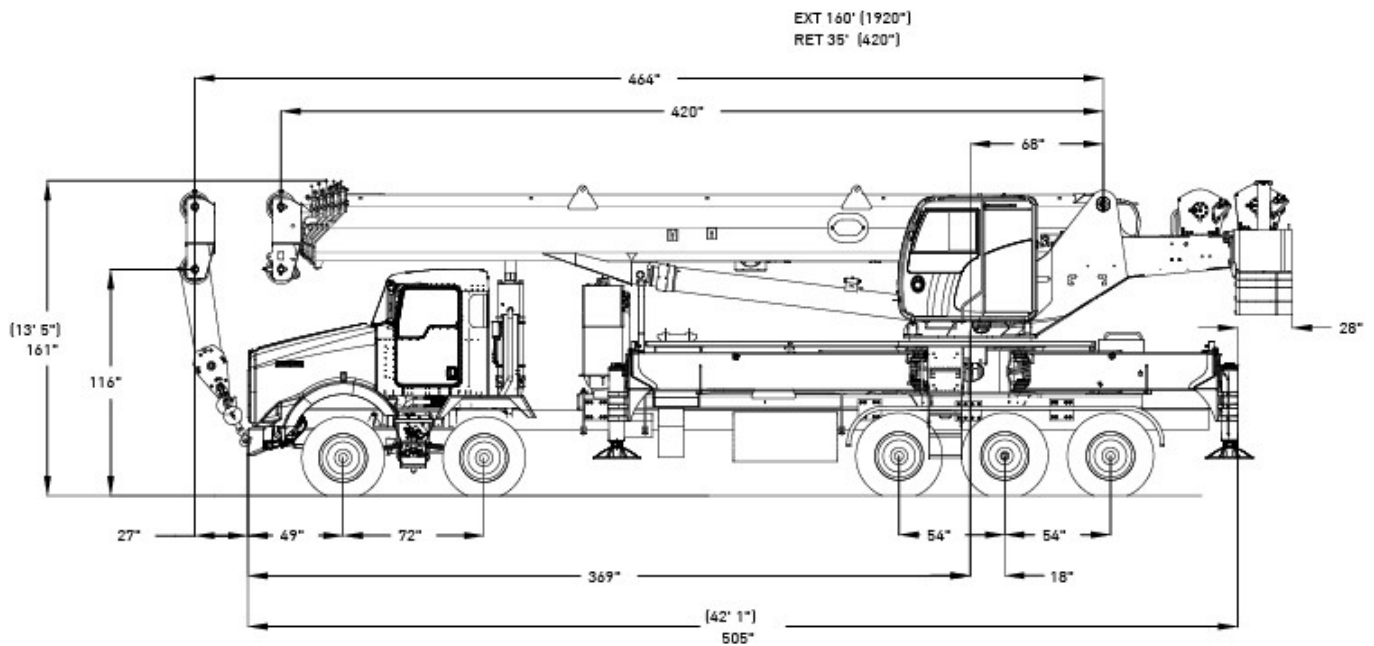
Crane Dimensions



DIMENSIONS

STINGER 80-160

Crane Dimensions

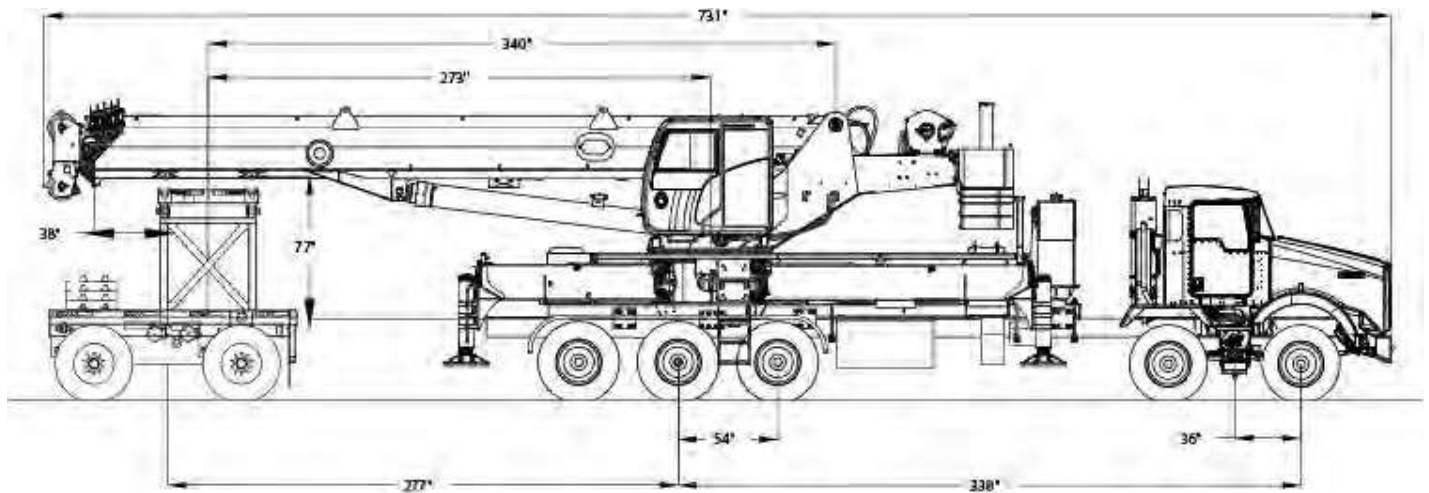


All Customer Chassis Must be Pre-Approved by Factory

DIMENSIONS

STINGER 80-160

Crane Dimensions with Boom Dolly



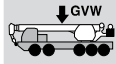
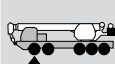
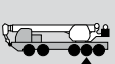






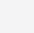
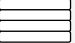
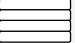
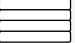
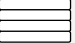
Estimated Axle Weight Distributions
Gross Wt. = 113,300

| Configuration (Counterweights:) | Tandem Front Axles | Tridem Rear Axles | Dolly |
|------------------------------------|--------------------|-------------------|--------|
| 12000 LBS ON DOLLY | 25,600 | 50,000 | 37,700 |

SPECIFICATIONS

STINGER 80-160

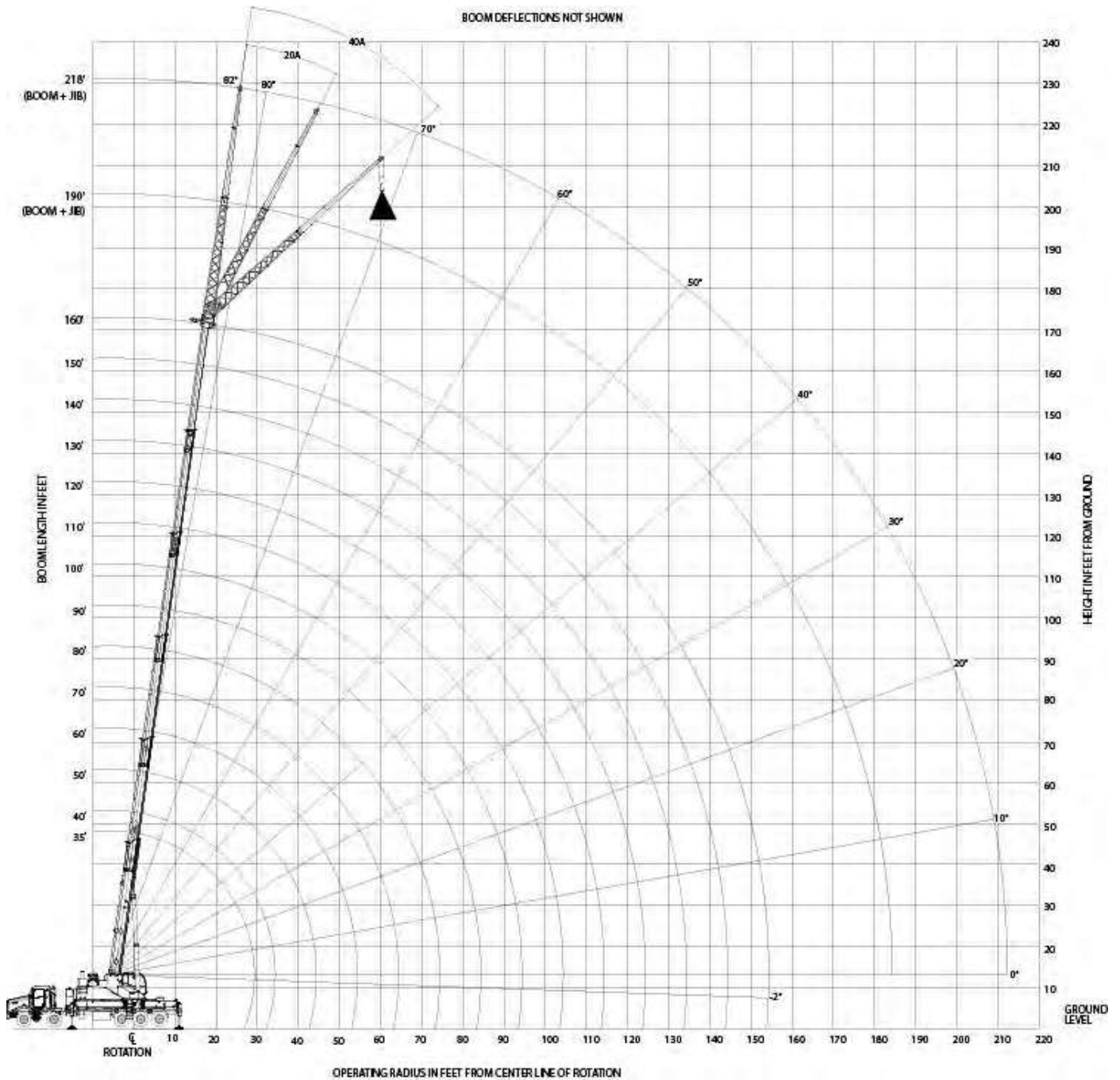
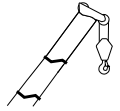
Approximate Crane Weights

| | |  |  |  |
|--|--|---|---|---|
| Configuration: | | | | |
|  1/4 tank fuel 200 lb operator seated in driver's cab 160 ft boom / no jib Base counterweight Aux winch | | 62,084 | 16,679 | 45,405 |
| Options: | | | | |
|  Full fuel tank | | 750 | 250 | 500 |
|  30'-58' bi-fold jib | | 2,706 | 2,282 | 424 |
|  80 ton 5 sheave block at bumper | | 1,608 | 2,246 | -638 |
|  60 ton 5 sheave block at bumper | | 1,204 | 1,798 | -594 |
|  50 ton 3 sheave block at bumper | | 1,036 | 1,447 | -411 |
|  12 ton overhaul-ball at bumper | | 420 | 578 | -158 |
|  2000 lb counterweight on superstructure | | 2,000 | -717 | 2,717 |
|  2000 lb on storage rack | | 2,000 | 1,277 | 723 |
|  4000 lb counterweight on superstructure | | 4,000 | -1,434 | 5,434 |
|  4000 lb on storage rack | | 4,000 | 2,554 | 1,446 |
| Bare chassis (EST) | | 27,040 | 16,740 | 10,300 |

RANGE DIAGRAM

Outriggers Fully Extended

STINGER 80-160



LOAD CHART

STINGER 80-160

Outriggers Fully Extended



Standard ASME
B30.5

| | | Boom Length | | | | | | | | | | | | | | | |
|-----|---------|-------------|---------|--------|--------|--------|--------|--------|--------|--------|--------|--------|--------|--------|--------|-----|--|
| | | 35 ft | 40 ft | 50 ft | 60 ft | 70 ft | 80 ft | 90 ft | 100 ft | 110 ft | 120 ft | 130 ft | 140 ft | 150 ft | 160 ft | | |
| ft | lbs | lbs | lbs | lbs | lbs | lbs | lbs | lbs | lbs | lbs | lbs | lbs | lbs | lbs | lbs | ft | |
| 10 | 160,000 | | | | | | | | | | | | | | | 10 | |
| 12 | 130,550 | 126,300 | 119,900 | 80,000 | 42,950 | | | | | | | | | | | 12 | |
| 15 | 113,800 | 109,850 | 103,750 | 80,000 | 42,950 | 42,800 | 42,400 | 39,500 | 35,900 | | | | | | | 15 | |
| 20 | 93,250 | 90,200 | 84,750 | 80,000 | 42,950 | 42,800 | 39,950 | 35,550 | 32,500 | 29,500 | 27,100 | | | | | 20 | |
| 25 | 76,200 | 75,550 | 71,450 | 67,650 | 42,950 | 42,800 | 36,650 | 32,700 | 29,700 | 26,900 | 24,250 | 22,550 | 20,700 | | | 25 | |
| 30 | | 58,450 | 56,300 | 54,800 | 42,950 | 40,650 | 34,200 | 30,300 | 27,300 | 24,400 | 22,350 | 20,800 | 19,350 | 18,150 | | 30 | |
| 35 | | | 40,650 | 39,350 | 41,100 | 38,350 | 32,150 | 28,250 | 25,000 | 22,600 | 20,700 | 19,300 | 17,900 | 16,750 | | 35 | |
| 40 | | | 35,950 | 29,550 | 31,250 | 32,350 | 30,450 | 26,550 | 23,400 | 21,100 | 19,350 | 17,800 | 16,700 | 15,750 | | 40 | |
| 45 | | | | 27,800 | 24,450 | 25,500 | 26,350 | 24,650 | 22,000 | 19,800 | 18,100 | 16,700 | 15,650 | 15,000 | | 45 | |
| 50 | | | | 24,500 | 21,550 | 20,550 | 21,300 | 21,900 | 20,750 | 18,700 | 17,100 | 15,700 | 14,600 | 13,200 | | 50 | |
| 55 | | | | | 20,700 | 17,950 | 17,500 | 18,050 | 18,500 | 16,950 | 15,350 | 14,300 | 12,950 | 12,950 | | 55 | |
| 60 | | | | | 18,000 | 17,100 | 15,350 | 15,050 | 15,500 | 15,100 | 13,850 | 12,950 | 12,800 | 11,500 | | 60 | |
| 65 | | | | | | 15,800 | 14,600 | 13,350 | 13,050 | 13,350 | 12,950 | 12,350 | 11,500 | 10,150 | | 65 | |
| 70 | | | | | | | 13,750 | 13,950 | 12,350 | 11,450 | 11,350 | 11,600 | 11,150 | 10,300 | 9,150 | 70 | |
| 75 | | | | | | | | 12,250 | 11,850 | 10,950 | 10,100 | 9,950 | 10,100 | 9,400 | 8,200 | 75 | |
| 80 | | | | | | | | 10,750 | 10,900 | 10,300 | 9,300 | 8,500 | 8,700 | 8,500 | 7,450 | 80 | |
| 85 | | | | | | | | | 9,650 | 9,550 | 8,600 | 7,750 | 7,700 | 7,750 | 6,700 | 85 | |
| 90 | | | | | | | | | 8,550 | 8,650 | 7,950 | 7,150 | 7,150 | 7,150 | 6,050 | 90 | |
| 95 | | | | | | | | | | 7,700 | 7,450 | 6,700 | 6,700 | 6,400 | 5,550 | 95 | |
| 100 | | | | | | | | | | 6,850 | 6,900 | 6,200 | 6,200 | 5,550 | 4,850 | 100 | |
| 105 | | | | | | | | | | | 6,150 | 5,850 | 5,750 | 4,850 | 4,150 | 105 | |
| 110 | | | | | | | | | | | 5,500 | 5,450 | 5,100 | 4,200 | 3,500 | 110 | |
| 115 | | | | | | | | | | | | 4,950 | 4,500 | 3,600 | 2,900 | 115 | |
| 120 | | | | | | | | | | | | 4,450 | 3,950 | 3,100 | 2,400 | 120 | |
| 125 | | | | | | | | | | | | | 3,450 | 2,600 | 1,950 | 125 | |
| 130 | | | | | | | | | | | | | 3,050 | 2,200 | 1,500 | 130 | |
| 135 | | | | | | | | | | | | | | 1,800 | 1,100 | 135 | |
| 140 | | | | | | | | | | | | | | 1,400 | | 140 | |

Note this chart has no deduct for a stowed jib and assumes the operator chooses the better boom configuration (strength or stability) for the planned lift. Charts are also available at mid-span and retracted outrigger positions and with counterweight configurations at 3, 5, 7 and 11,000 lbs.

Notes to lifting capacity

Lifting capacities do not exceed 85% of tipping load. Weight of hook blocks and slings are part of the load, and are to be deducted from the capacity ratings. Consult operation manual for further details.

Note: Data published herein is intended as a guide only and shall not be construed to warrant applicability for lifting purposes. Crane operation is subject to the computer charts and operation manual both supplied with the crane.

LOAD CHART

STINGER 80-160

With Jib, Outriggers Fully Extended



15000



360°

Standard ASME
B30.5



| ft | Boom Length | | ft | Boom Length | | ft | Boom Length | |
|-----|-------------|--------|-----|-------------|--------|-----|-------------|--------|
| | 140 ft | 160 ft | | 140 ft | 160 ft | | 140 ft | 160 ft |
| 40 | 14,300 | 13,050 | 50 | 8,900 | 8,350 | 55 | 6,850 | 6,450 |
| 45 | 13,000 | 11,850 | 55 | 8,350 | 7,800 | 60 | 6,550 | 6,150 |
| 50 | 12,000 | 10,950 | 60 | 7,850 | 7,400 | 65 | 6,250 | 5,900 |
| 55 | 11,000 | 10,000 | 65 | 7,450 | 7,000 | 70 | 6,050 | 5,700 |
| 60 | 10,200 | 9,200 | 70 | 7,050 | 6,650 | 75 | 5,800 | 5,450 |
| 65 | 9,450 | 8,450 | 75 | 6,700 | 6,250 | 80 | 5,550 | 5,200 |
| 70 | 8,700 | 7,700 | 80 | 6,400 | 6,000 | 85 | 5,400 | 5,050 |
| 75 | 7,900 | 7,000 | 85 | 6,100 | 5,750 | 90 | 5,200 | 4,850 |
| 80 | 7,250 | 6,350 | 90 | 5,800 | 5,450 | 95 | 5,050 | 4,700 |
| 85 | 6,700 | 5,750 | 95 | 5,550 | 5,000 | 100 | 4,850 | 4,600 |
| 90 | 6,100 | 5,300 | 100 | 5,350 | 4,600 | 105 | 4,700 | 4,300 |
| 95 | 5,650 | 4,800 | 105 | 4,950 | 4,200 | 110 | 4,600 | 4,000 |
| 100 | 5,150 | 4,400 | 110 | 4,500 | 3,850 | 115 | 4,200 | 3,650 |
| 105 | 4,850 | 4,050 | 115 | 4,150 | 3,500 | 120 | 3,650 | 3,300 |
| 110 | 4,500 | 3,700 | 120 | 3,950 | 3,250 | 125 | | 3,000 |
| 115 | 4,200 | 3,350 | 125 | 3,700 | 2,950 | 130 | | 2,700 |
| 120 | 3,950 | 3,050 | 130 | 3,450 | 2,650 | | | |
| 125 | 3,650 | 2,800 | 135 | 3,250 | 2,350 | | | |
| 130 | 3,400 | 2,400 | 140 | 3,000 | 1,900 | | | |
| 135 | 3,150 | 1,950 | 145 | 2,800 | 1,500 | | | |
| 140 | 3,000 | 1,550 | 150 | 1,050 | 1,100 | | | |
| 145 | 2,800 | 1,200 | | | | | | |
| 150 | 2,450 | | | | | | | |
| 155 | 2,150 | | | | | | | |
| 160 | 1,850 | | | | | | | |

Note this assumes the operator chooses the better boom configuration (strength or stability) for the planned lift. Charts are also available at the mid-span outrigger positions and with counterweight configurations at 7 and 11,000 lbs.

Notes to lifting capacity

Lifting capacities do not exceed 85% of tipping load. Weight of hook blocks and slings are part of the load, and are to be deducted from the capacity ratings. Consult operation manual for further details.

Note: Data published herein is intended as a guide only and shall not be construed to warrant applicability for lifting purposes. Crane operation is subject to the computer charts and operation manual both supplied with the crane.

LOAD CHART

STINGER 80-160

With Jib, Outriggers Fully Extended



15000






360°

Standard ASME
B30.5



Bi-fold

58 ft

|  0° ft | Boom Length | |  20° ft | Boom Length | |  40° ft | Boom Length | |
|--|-------------|--------|---|-------------|--------|---|-------------|--------|
| | 140 ft | 160 ft | | 140 ft | 160 ft | | 140 ft | 160 ft |
| 50 | 9,300 | 8,800 | 65 | 5,100 | 4,850 | 80 | 3,500 | 3,300 |
| 55 | 8,450 | 7,900 | 70 | 4,800 | 4,600 | 85 | 3,350 | 3,150 |
| 60 | 7,750 | 7,350 | 75 | 4,600 | 4,350 | 90 | 3,250 | 3,050 |
| 65 | 7,200 | 6,750 | 80 | 4,300 | 4,100 | 95 | 3,050 | 2,950 |
| 70 | 6,650 | 6,200 | 85 | 4,100 | 3,850 | 100 | 3,000 | 2,800 |
| 75 | 6,150 | 5,800 | 90 | 3,850 | 3,700 | 105 | 2,900 | 2,700 |
| 80 | 5,750 | 5,450 | 95 | 3,700 | 3,500 | 110 | 2,750 | 2,600 |
| 85 | 5,350 | 5,100 | 100 | 3,500 | 3,350 | 115 | 2,650 | 2,450 |
| 90 | 5,000 | 4,800 | 105 | 3,350 | 3,150 | 120 | 2,500 | 2,400 |
| 95 | 4,700 | 4,500 | 110 | 3,150 | 3,050 | 125 | 2,450 | 2,350 |
| 100 | 4,400 | 4,150 | 115 | 3,050 | 2,900 | 130 | 2,350 | 2,250 |
| 105 | 4,150 | 3,750 | 120 | 2,950 | 2,750 | 135 | 2,300 | 2,150 |
| 110 | 3,950 | 3,400 | 125 | 2,800 | 2,650 | 140 | 2,250 | 2,050 |
| 115 | 3,700 | 3,100 | 130 | 2,700 | 2,500 | 145 | 2,150 | 2,000 |
| 120 | 3,450 | 2,800 | 135 | 2,600 | 2,350 | 150 | | 1,750 |
| 125 | 3,150 | 2,500 | 140 | 2,450 | 2,100 | 155 | | 1,600 |
| 130 | 2,950 | 2,300 | 145 | 2,350 | 1,900 | 160 | | 1000 |
| 135 | 2,650 | 2,050 | 150 | 2,100 | 1,650 | | | |
| 140 | 2,450 | 1,800 | 155 | 1,900 | 1,450 | | | |
| 145 | 2,350 | 1,600 | 160 | 1,800 | 1,250 | | | |
| 150 | 2,150 | 1,400 | 165 | 1,750 | | | | |
| 155 | 2,000 | 1,100 | 170 | 1650 | | | | |
| 160 | 1,900 | | 175 | 1450 | | | | |
| 165 | 1,700 | | | | | | | |
| 170 | 1,600 | | | | | | | |
| 175 | 1,450 | | | | | | | |
| 180 | 1,250 | | | | | | | |

Notes to lifting capacity




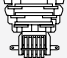




Lifting capacities do not exceed 85% of tipping load. Weight of hook blocks and slings are part of the load, and are to be deducted from the capacity ratings. Consult operation manual for further details.

Note: Data published herein is intended as a guide only and shall not be construed to warrant applicability for lifting purposes. Crane operation is subject to the computer charts and operation manual both supplied with the crane.

TECHNICAL DESCRIPTION

STINGER 80-160

Boom, Jib and Rotation

| | | |
|---|---|------------------------------------|
|  | Six-section full power telescopic boom with A and B modes | |
| | Boom length | Retracted 35 ft Extended 160 ft |
|  | Boom maximum tip height | 170 ft |
| | Boom elevation angle range (min. / max.) | -2° / 82° |
|  | Boom extend / retract speed | 113 / 101 Sec |
| | Boom up / down speed | 60 / 50 Sec |
|  | Boom head | quick reeving |
|  | 360° continuous rotation | |
| Optional | | |
|  | Bi-fold swing away jib can be offset to 0°, 20° or 40° | 30 ft / 58 ft |
| | Maximum tip height with extended jib | 228 ft |
|  | 5 sheave block, quick reeve | 80 UST |
| | 5 sheave block, quick reeve | 60 UST |
| | 3 sheave block, quick reeve | 50 UST |
|  | Top swivel ball with hook and latch | 12 UST |

Main and Aux Hoist, Rope and Hook

| | | | |
|---|-----------------------------|------------|----------------|
|  | Two speeds | Low Speed: | High Speed: |
| | First layer (no load speed) | 204 ft/min | 363 ft/min |
| | Fifth layer (no load speed) | 293 ft/min | 522 ft/min |
|  | First layer | Low Speed: | High Speed: |
| | Fifth layer | 17,500 lb | 8,360 lb |
| | | 12,180 lb | 5,820 lb |
|  | Permissible line pull | | 15,900 lb |
| | Average breaking strength | | 80,000 lb |
|  | | | 600' of 3/4 in |

TECHNICAL DESCRIPTION

STINGER 80-160

Operator Cab



Sliding door
Sliding window on the right side
Tilting, tinted glass skylight
Removable front windshield
Six-way adjustable heated seat with armrest dual-axis electro-proportional joysticks
Joystick control for hoist(s), swing and boom elevation
Foot pedals for swing brake and engine rpm
Hand control for engine rpm
Hydraulic cab tilt (0-18 degrees)



Optional features for upper cab
Hydraulically powered air-conditioning and flameless heater
Work lights



Electronic rated capacity indicator with color display



Color touch-screen display with screens for lifting, environmental controls, engine data.
Allows operator to adjust speeds of all functions on-the-fly to adapt to different lifting conditions
All crane manuals and load charts are loaded into the display

Boom Rotation



Glide swing with foot pedal actuated multi-disc brake and air actuated 360° house lock



Hydraulic driven double planetary reduction gear drive

2.2 rev/min

Counterweight



Main counterweight, non removable, bolted to upper crane structure

3,000 lbs

Removable counterweight package

2 x 2,000 lbs / 2 x 4,000 lbs

Outriggers



X-pattern

Swing out and down

Outer edge of pad

Fully Extended

Front:
Rear:

28'
27' 6"

Mid Span

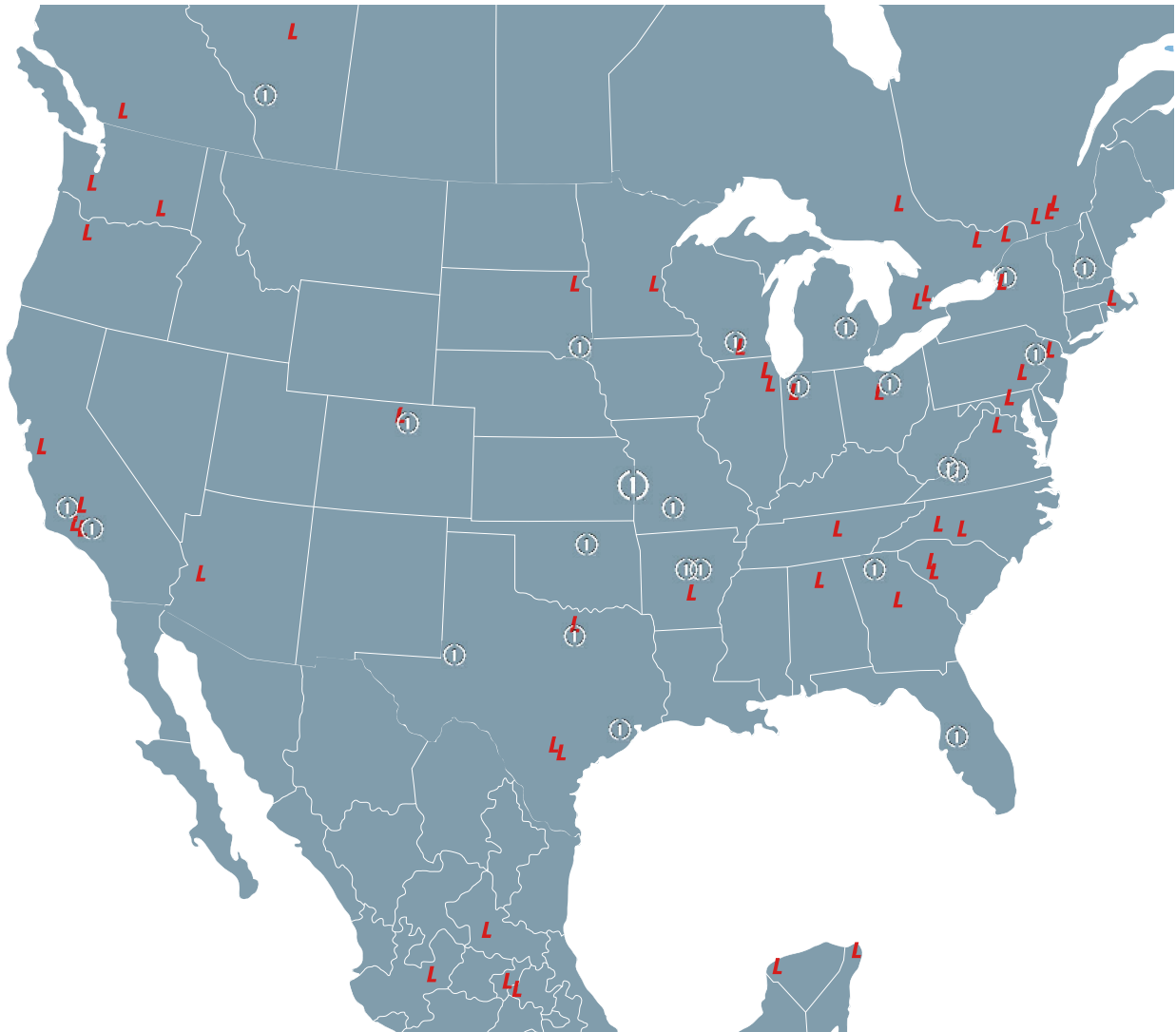
Front:
Rear:

21' - 9"
21' - 1"

Fully Retracted

Front and rear:

8' - 5"



24/7 CALL CENTER
833-281-7911

PARTS QUESTIONS
833-PARTSLK (833-727-8755)
PARTSSUPPORT@LOADKINGMFG.COM

PARTS ORDERS
STORE.LOADKINGMFG.COM

WARRANTY
CRANEWARRANTY@LOADKINGMFG.COM

All our new cranes are backed by an industry-leading 3-year basic and 5-year structural warranty

L **LOAD KING AUTHORIZED
SERVICE CENTERS**



**CUSTOM TRUCK ONE
SOURCE LOCATIONS**

www.loadkingmfg.com

